

MasterSeal® 930

Sealing system for irregular and unconventional joints

MATERIAL DESCRIPTION

MasterSeal 930 joint sealing system consists of two products - **MasterSeal 930** tape and **MasterBrace 1446** or **1444** epoxy. The **MasterSeal 930** tape is a highly elastic, rot-proof and chemically resistant sealing tape. **MasterBrace 1446** or **1444** is a two-part epoxy compound which establishes a strong bond to various types of substrate.

AREAS OF APPLICATION

Sealing of construction joints, expansion joints, connecting joints, cracks and crevices to ensure a long-term waterproof and functional building envelope. Typical uses are for concrete tanks, cast and cement-pipe connections, bridge decks, tunnels, water towers and reservoirs, ponds, silos, containers, secondary tanks. **MasterSeal 930** can be applied on dry or slightly humid substrates. It is ideal for joints with very large expansion or irregular, broken joint flanks. **MasterSeal 930** is grey coloured, weather and waterproof.

CHARACTERISTICS AND BENEFITS

- Durable
- Long lasting elasticity, even at low temperatures
- Root resistant
- Cost effective
- Easy to apply
- User friendly heat welding tape overlaps
- Can be applied horizontally, vertically and even overhead.
- Approved to AS/NZS 4020:2018 (tested to the maximum exposure level) - suitable for contact with potable water.
-

PROPERTIES

Shore Hardness A (ISO 868)	ca.80
Tensile strength (EN ISO 527-1)	> 6 N/mm ²
Elongation at break (EN ISO 527-1)	> 400%

APPLICATION

Surface Preparation

Contact surfaces must be clean and free from dust, grease, water, oil, and other contaminants impairing adhesion. Concrete should be at least 4 weeks old. In order to provide maximum adhesion, concrete surfaces should be mechanically abraded.

Application

To provide a 'base coat' of epoxy adhesive, apply the **MasterBrace 1446** or **1444** on both sides along the joint or crack on the prepared substrate, preferably with a notched trowel or spatula. Layer thickness should be about 1-2mm. When sealing cracks or narrow joints the **MasterSeal 930** tape should not be bonded along the centre line of the tape. A minimum unbonded width of 20mm is recommended to allow for expansion and contraction.

Wipe the edges of the tape with **MasterSeal 930** Cleaner then place the clean and well-aired tape immediately into the adhesive layer and press well in with a roller (for very wide joints draw the tape suitably into the joint so that a hollow is formed).

Apply the **MasterBrace 1446** or **1444** 'top coat' wet-on-wet with the 'base coat' ensuring the edge of the **MasterSeal 930** tape is completely covered with **MasterBrace 1446** or **1444** to a thickness of 2-3mm.

Notes:

- By warming up the membrane, it can be stretched over slight irregularities of the substrate. The same method can be used in case of corners, cavities, pipe crossing.
- In the case of negative water pressure, back up the membrane with an adequate support eg steel sheet.
- If individual tapes need to be connected into longer pieces (also T-pieces etc) they can easily be joined using an appropriate heat welder as per the following:
 1. Provide an overlap of 30mm.
 2. Cut the tape to size where required.
 3. Round the corners of the top tape.
 4. Prepare the bottom tape thoroughly with an abrasive pad (grit size 150) to a minimum width of 30mm.
 5. Clean bottom tape thoroughly to remove any dirt.
 6. Prepare the underside of the top tape as per steps 4 and 5.
 7. Using the heat welder, spot fix along the width of the tape joint to provide initial bond.
 8. Final weld the joint along the complete width of the tape, using a narrow roller to ensure full adhesion between the top and bottom tapes.
 9. Welding temperatures – 1mm thickness = approx 270°C (or 4 on the Leister Triac); 2mm thickness = approx 360 °C (or 5.5 on the Leister Triac).

MasterSeal[®] 930

Sealing system for irregular and unconventional joints

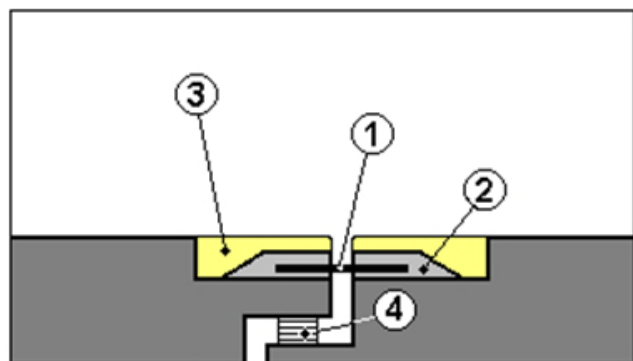
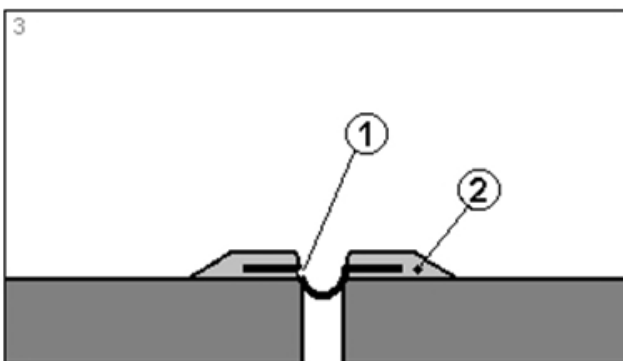
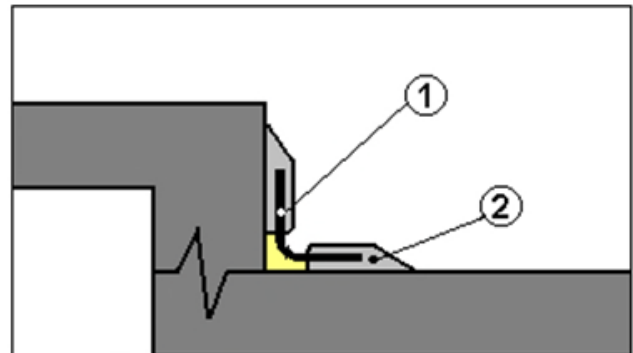
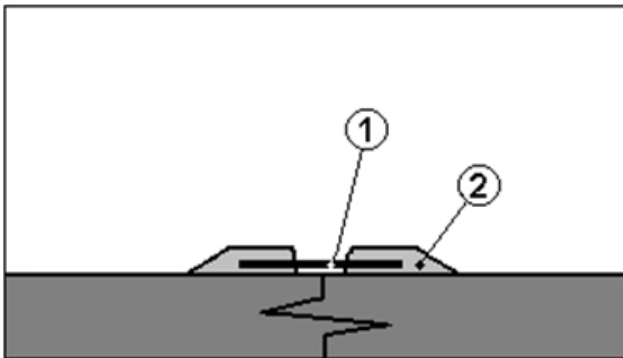
PACKAGING

MasterSeal 930 is available in a range of widths in either:
1mm x 20m or 2mm x 20m.

STORAGE

Store MasterSeal 930 well protected against sunlight at ambient temperature in dry conditions.

- 1: MasterSeal 930
- 2: MasterBrace 1446 or 1444
- 3: MasterEmaco T 545 or similar
- 4: Bearing



MasterSeal[®] 930

Sealing system for irregular and unconventional joints

DISCLAIMER

MasterSeal-930 -ANZ-V5-0921

STATEMENT OF RESPONSIBILITY The technical information and application advice given in this MB Solutions Australia Pty Ltd publication are based on the present state of our best scientific and practical knowledge. As the information herein is of a general nature, no assumption can be made as to a product's suitability for a particular use or application and no warranty as to its accuracy, reliability or completeness either expressed or implied is given other than those required by law. The user is responsible for checking the suitability of products for their intended use and for ensuring that the application and use of the product is in accordance with the manufacturer's guidelines and recommendations.

NOTE Field service where provided does not constitute supervisory responsibility. Suggestions made by MB Solutions Australia Pty Ltd either orally or in writing may be followed, modified or rejected by the owner, engineer or contractor since they, and not MB Solutions Australia Pty Ltd, are responsible for carrying out procedures appropriate to a specific application.

<p>MB Solutions Australia Pty Ltd ABN 69 634 934 419 11 Stanton Road Seven Hills NSW 2147</p> <p>Freecall: 1300 227 300 www.master-builders-solutions.com/en-au</p>	<p>MB Solutions New Zealand Ltd 45C William Pickering Drive Albany, Auckland New Zealand</p> <p>Freecall: 0800 334 877</p>	<p>Emergency Advice: 1300 954 583 within Australia (24hr) 0800 001 607 within New Zealand</p>
--	---	--

® = registered trademark of a MBCC Group member in many countries of the world